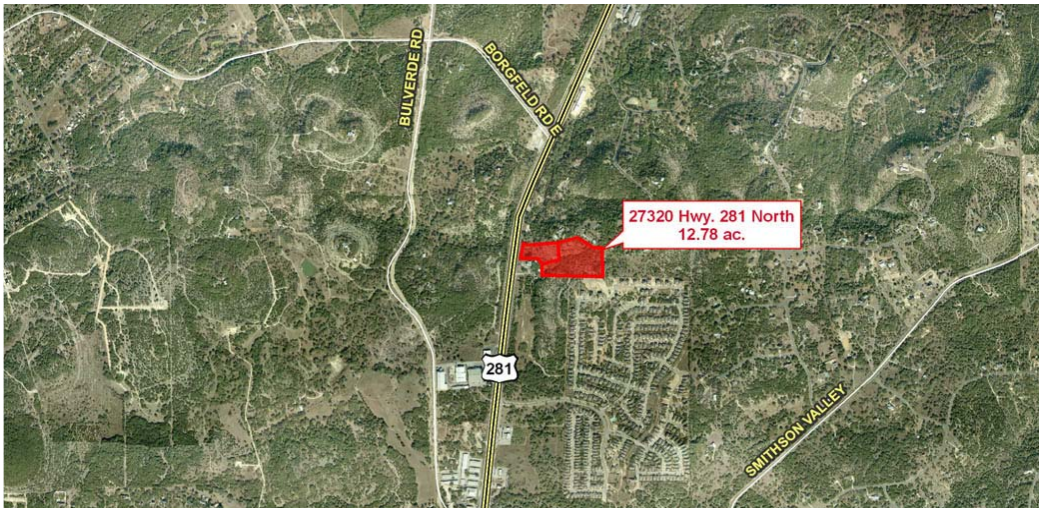


27320 Hwy 281 N - 12.78 ac.

HWY 281 NORTH OF TRINITY PARK

For Sale



COMMENTS

- * Located in the rapidly growing San Antonio north side
- * Competitive pricing
- * Immediate access to Hwy 281
- * Great visibility to Hwy 281

PROPERTY DESCRIPTION

12.78 acres along the east side of 281, just south of Borgfeld Dr. The tract has a nice building site along 281 but the back part of the tract has significant topography above 281. This tract is located in Bexar county but is within Comal ISD. There is a small office to the south of this tract and residential along the east. This would be an ideal location for a small office with some residential lots along the back.

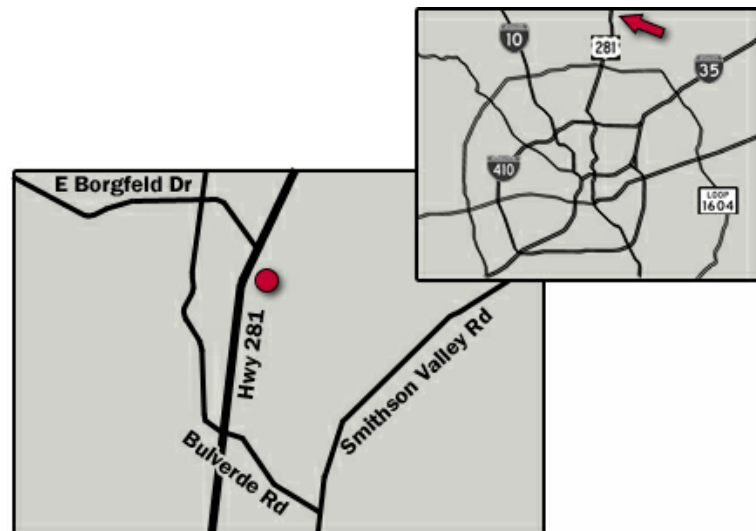
ZONING

OCL MLOD-1

ADDRESS

27320 Hwy 281 North
San Antonio, TX 78261

Year: 2011	1 Mile	3 Mile	5 Mile
Avg HH Inc:	\$127,733	\$114,026	\$121,217
Population:	2,105	24,690	65,982
Households:	683	8,266	22,376



Ian McAngus
Land Brokerage

imcangus@naireocsanantonio.com

NAI REOC San Antonio

Commercial Real Estate Services, Worldwide.

NAI REOC San Antonio is a licensed Real Estate broker in the State of Texas operating under REOC General Partner, LLC. The information contained herein is deemed accurate as it has been reported to us by reliable sources. As such, we can make no warranty or representation as to the accuracy or completeness thereof. Further, the property is presented subject to availability, change in price or terms, prior sale or lease, or withdrawal from the market.

1826 N Loop 1604 W
Suite 250
San Antonio TX 78248
tel 210 524 4000
fax 210 524 4029
naireocsanantonio.com